

**Contribute to  
Services for Children  
and Families on the  
Sicangu Lakota  
Reservation by  
Participating in  
SPARS**

**WOLAKOTA  
GLUHA MANIPI**



**Your participation** will help to  
continue providing services that are:

Individualized - Child-centered -  
Family driven - Strength based -  
Culturally competent



***For more information:***

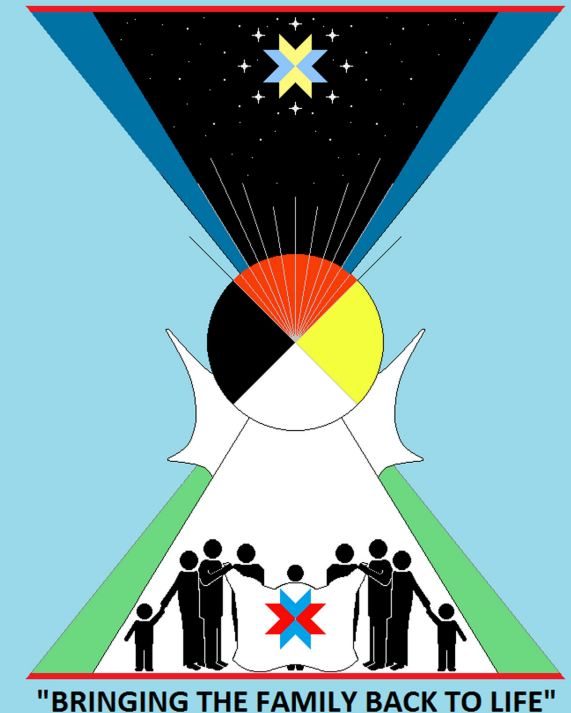
**SGU Tiwahe Glu Kini Pi**  
"Bringing the Family Back to Life"

**105 Antelope Lake Circle Dr.  
Mission, SD 57555**

**Marlies White Hat  
Director  
(605)856-8203**

**Justin Baker  
Lead Family Coordinator  
(605)856-8142**

**SGUTIWAHE GLU KINI PĪ**



**SPARS**

SAMHSA'S Performance Accountability and Reporting System

**What is SPARS and how it helps  
improve the lives of children and  
families with emotional,  
behavioral and spiritual needs.**



## What is Spars?

SPARS is a *family* driven youth-guided evaluation that allows us to gather information on the effectiveness of the program offered to our relatives (clients). In order to meet the needs of our communities and families, and be able to provide the best services possible, it is *crucial* that we get your feedback.

## Why is SPARS important?

Evaluation measures progress, outcomes and processes of the SGU Tiwahe Glu Kini Pi Expansion. Evaluation tells the story of the project. The evaluation data tells the project how successful the services are and what can be improved. It also tells Congress what the federal money was spent for and encourages the government to provide more funding for future services.

## Who makes SPARS a success

**You do.** The community, families, children, youth, staff, program management and evaluation teams make SPARS successful. Everyone is dedicated to the Tiwahe Glu Kini Pi goal of **Bringing the Family Back to Life.**

## Is it confidential?

**Yes.** SPARS will be kept completely confidential. No names will be entered on the evaluation.

## Will I be provided compensation for my participation?

**Yes.** You and your child or youth will each be given **\$20** stipend for your interview each time you participate in the study.



The Substance Abuse and Mental Health Services (SAMHSA) is proud to provide the SPARS website - an online data entry, reporting, technical assistance request, and training system to support grantees in reporting timely and accurate data to SAMHSA.